

Delivering the RDPE (with reference to Market Towns)

Sophie Fraenkel – RDPE Network

Melanie Fischer – emda

Amanda Brown – DDEP

Rural Development Programme for England 2007 – 2013 : Overview

- Total budget of £3.9 billion
- £3.3 billion allocated to land management schemes
(‘Axis 2’: *Natural England/Forestry Commission*)
- £600 million for **socio economic measures**
(‘Axes 1 & 3’: *RDA*s)
- £60 million for **socio economic measures** in the East Midlands (*emda*)
- of which, £12m for the **LEADER Approach**
(Axis 4 - via *Local Action Groups*; funding from Axes 1 & 3)
- Funding sources –
www.rdpenetwork.org.uk/fundingsources
- Regional priorities

Socio-economic measures

(Axis 1 – direct RDA delivery in EM)

- Adding value to agricultural, horticultural and forestry products
- Cooperation for the development of new products / processes
- Water resource management
- Vocational training and skills
- Improving the economic value of forests
- Diversification into non-agricultural activity

Socio-economic measures

(Axis 3 –via Local Action Groups in EM)

- Diversification into non-agricultural activity
- Creation and development of micro-enterprise
- Tourism development
- Rural heritage - conservation & upgrading
- Training and information
- Co-operation

LEADER = 'Links between actions for the development of the rural economy'

= an approach (bottom-up, community-led development, like Market Town Partnerships)

- A delivery method for part of RDPE. **Not** a continuation of former LEADER+ programme
- Same rules & regulations as the rest of RDPE
- European Agricultural Fund for Rural Development (EAFRD) + Defra match funding
- £12m in East Midlands 2008-13

LEADER APPROACH

How does it work...?

- Local Action Groups (LAGs)
- Public-private-voluntary sector mix
- Develop & deliver a Local Development Strategy
- Fits with national RDPE & Regional Implementation Plan
- Joins economic, environmental & social
- Local project selection & decision making
- Administered through *emda*



Local Partnerships in place

- Selection of LEADER areas ?
- Local Partnerships in place
- Local Priorities have been set



How to Access Funding

- Expression of Interest Forms
- Full Application
- Contracts issued
- Monitoring and reporting is negotiated on a individual basis



Case Study



delivered by





Rural Heritage

The enhancement of Rural Heritage is part of the process of increasing the success of the Small Businesses in our Villages and Market Towns

- Grants awards have a lower limit of £3,500
- Grant can fund up to 75% of total eligible project costs
- Higher grant rates could be considered in certain circumstances if your project meets eligible criteria and you are unable to meet the minimum match funding requirement of 25%



RDPE Measures supported - Lincolnshire

- 311 Farm Diversification
- 312 Creation and Development of Micro-Enterprises
- 313 Encouragement of tourism activities
- 323 Conservation and upgrading of the rural heritage
- 331 Training and Information supporting the above



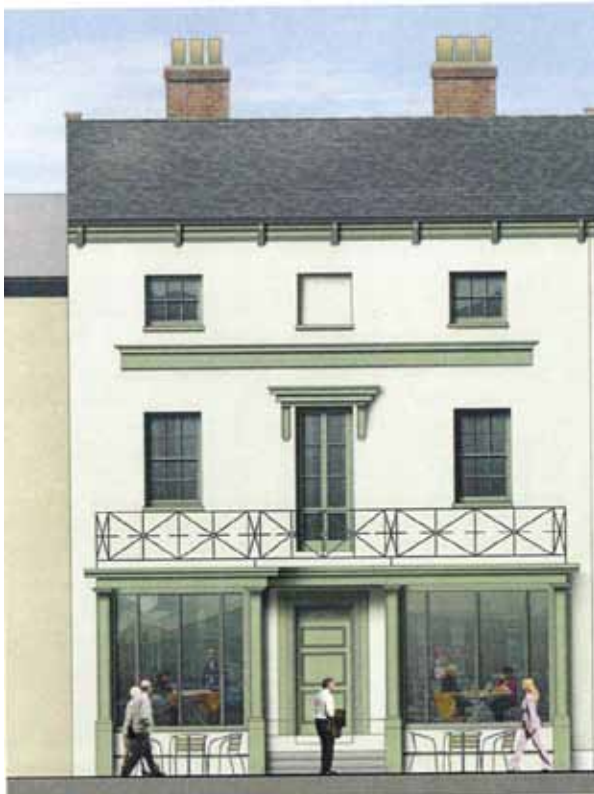
LEADER Criteria - Lincolnshire

- Located in or benefiting Leader area
- Minimum grant of £3,500
- Private match funding
- Commercial projects – up to 50% grant (others vary)
- Assessment through 2 stage application process
 - Expression of Interest
 - Full Application
 - Decision made by Local Action Group

Tourism – Louth Mansion House



Heritage – Caistor Old Paper Shop





Why the RDPE Network?

- Purpose: Support the delivery of RDPE through the exchange of ideas, experience, practice and information etc. – Regulatory requirement
- Information exchange:
 - Ø Policy, programme management, delivery
 - Ø 4 axes



Priorities for 2009-10

Based on need identified by those interested in RDPE:

- Website – news, publications, projects, discussion forums, activities
- Projects database – across the axes
- Links to support delivery of the RDPE
- The Leader approach



Join the Rural Development Programme for England (RDPE) Network and benefit from sharing ideas, knowledge, experience and practice with others.

Find out more



Share projects

Our project directory contains information on projects across the regions. Submit your project to the directory and review others in your area.

More



Discuss

Have your say on RDPE in our discussion forums. Start your own topic or comment on those already underway.

More



What's on

Find out what the RDPE Network has been doing since its establishment and how you can get involved in upcoming activities.

More

→ Latest news

100% grants on RDPE
Environment Secretary Hilary Benn has announced measures to increase financial aid for rural businesses to help them through the economic downturn.
4 May 2009 22:33

→ Activities

Rural Services Network and RDPE Network discussion on integrated delivery
The Rural Services Network and the RDPE Network are jointly hosting a discussion around further developing integrated delivery of RDPE.
23 Jun 2009 12:50

→ Project exchange

- [Local food outdoor catering \(Farm Shop expansion\)](#)
- [Fruit Juice Production](#)
- [Seasoned Firewood](#)

→ From the forum

RDPE and Forestry
james.elliott
30 Jun 2009 10:52

Site selector United Kingdom Europe



The European Agricultural Fund for Rural Development: Europe investing in rural areas.



Commission for Rural Communities
Building rural communities

Local Action Groups

The Leader approach is a delivery mechanism under the Rural Development Programme for England (RDPE). It is a method of using local knowledge to promote an integrated "bottom up", community-led delivery of RDPE funding. In England it is being implemented by Local Action Groups and targeted on rural areas with particular needs or priorities, as identified by the Regional Development Agencies (RDAs) and regional implementation plans (RIP).

A Local Action Group (LAG) is made up of interested volunteers from the public, private and voluntary sector. Each LAG develops a Local Development Strategy and funds projects in its locality to deliver this strategy.

Cooperation is a key part of the Leader approach. LAGs are encouraged to work jointly with another LAG or similar group in another region. Member States of Rural counties Cooperation is expected to add value to the Leader approach, enabling LAGs to obtain access to information and new ideas, stimulate and support innovation and improve skills and delivery. Cooperation projects will help ensure that newly formed LAGs can benefit from the working and experience of those already well established. The UK rural website contains further information on international cooperation opportunities, the Leader Approach and archive material on the previous Leader + programme. You can also share information and discuss issues relating to the Leader Approach on our Leader Approach Forum.

Below is a directory of LAGs in England. Click on a LAG's name to explore further details for the LAG, together with a brief summary about it, where it is located and the projects it supports. The directory is still under development and more information will be added as it becomes available. If you see any information in our directory that needs updating then please contact us.

East of England

- Essex
- Essex Coast
- Eastern Chalk
- Greenham Ridge
- Haverhill Leicestershire
- The East Angles
- Ipswich Valley

East Midlands

- Beeston, Newark and Sherwood
- Bedford and North East Derbyshire
- Coastal Action Zone Partnership
- Leicestershire
- North Derbyshire
- Peak District Rural Action Zone LEADER
- South East

North East

- East Durham LEADER
- North Pennine Dales
- North York Moors, Coast and Hills
- Northumberland Coast and Lakeside
- Northumberland Uplands

North West

- Cumbria Fells and Dales
- Elterre
- North Lancashire
- Northern Merches
- Central Lancashire
- Ribblesdale and Wharfedale
- West Lancashire

South East

- Aylesbury Vale and Rural Midland Keynes
- Chilterns
- Isle of Wight
- Kent Downs and Marshes
- Loddon and Ewerley
- North Wessex Downs
- South Downs
- Surrey Hills
- Sussex Downs and Low Weald
- Three Harts and a Coastal Plain
- Wiltshire Downs
- Weald
- Winchester and East Hampshire Downs

South West

- Dartmoor Hills and East Devon
- Dorset Coast
- Dorset
- East Cornwall
- Forest of Dean
- Greater Dartmoor
- Isles of Guernsey
- Levels and Moors
- New Forest
- North Dorset and Dorset
- North Devon Downs
- North Devon
- North Devon Coastal
- Torridge and North Devon
- West Cornwall
- Wiltshire Downs

West Midlands

- Central Worcestershire
- Central Worcestershire
- Herefordshire
- North Worcestershire
- Northern Merches
- Peak District Rural Action Zone LEADER
- Shropshire Hills
- Staffordshire
- Worcestershire

Yorkshire and the Humber

- Coast, Wolds, Welfords and Wabesley
- East Pennine
- North York Moors, Coast and Hills
- South Pennines Leader
- Yorkshire Dales



Share projects

The projects directory holds records of all types of projects related to all regions. Submit your project to the directory and let other similar projects in your area.

[More](#)



Discuss

Join in the community forums and discuss any aspects of Rural Development in England with fellow members. Visit your own topic or search others.

[More](#)



What's on

Find out about the latest activities within RDPE and get involved in the next event in your area. Find out about upcoming activities and how to take part at past activities.

[More](#)



Submit a project

[East of England](#)[East Midlands](#)[North East](#)[North West](#)[South East](#)[South West](#)[West Midlands](#)[Yorkshire and the Humber](#)[Transnational](#)

Projects

Interested in finding out how others are carrying out RDPE funded projects across England? Use our directory to search for projects in your area or for projects across the English regions. You can also search for projects across the UK and other European Member States via the UK National Rural Network website.

Find out what worked for others, what they struggled with and how they overcame the challenges they faced. Each region has different funding priorities and guidelines but people have found it useful to learn from the experiences of others and you may be able to apply this information to your own project.

Help others benefit from your practice, experience and lessons learnt. Take a few moments to fill in our simple project submission form and add details of your project to our database.

Looking for a project?

All areas



[Local food outdoor catering \(Farm Shop expansion\)](#)

[South East](#) RDPE 50% Private investment 50% RDPE £3058 [0 user notes](#)

2 days ago by Ken Brown

[Fruit Juice Production](#)

[South East](#) RDPE 40%, private investment 60% RDPE £48,000 [0 user notes](#)

2 days ago by Ken Brown

[Seasoned Firewood](#)

[South East](#) RDPE 74%, private investment 26% RDPE £26,000 [0 user notes](#)

2 days ago by Ken Brown

[Bluebell Dairy](#)

[East Midlands](#) RDPE / NTI (New Technology Initiative) for equipment Approx. €143,000 (RDPE) / €10,000 (NTI) [0 user notes](#)

8 days ago by Rosemary Brown

[Full project archive](#)

Share projects

The projects directory holds records of all types of projects related to all regions. Submit your project to the directory and find other similar projects in your area.

[More](#)

Discuss

Join in the community forums and discuss any aspects of Rural Development in England with fellow members. Start your own topic or search others.

[More](#)

What's on

Find out about the latest activities within RDPE and get involved in the next event in your area. Find out about upcoming activities and look back at past activities.

[More](#)[Site selector](#)[United Kingdom](#)[Europe](#)

Funding Sources

- Different funding criteria for each region
- Funding available via RDAs, Forestry Commission, Natural England and sub-regional bodies such as Business Link, LandSkills etc.
- Links to RDPE pages of the above from RDPE Network website Funding Sources page:
www.rdpnetwork.org.uk/fundingsources



Further information:

Tel: 01242 534054

E-mail: rdpenetwork@ruralcommunities.gov.uk

RDPE Network:

www.rdpenetwork.org.uk

UK NRN:

www.uknationalruralnetwork.org.uk



The European Agricultural Fund
for Rural Development:
Europe investing in rural areas.



For discussion:

1. How can RDPE be used to support Market Town regeneration? (Businesses / Communities etc)
2. What ideas and experience can be shared around the development and operation between a Local Action Group and Market Town Partnership?
3. How can we support Market Towns (Businesses / Communities etc.) access RDPE funding?